



# Gym Matta Floor Protection

The ultimate floor  
with bounce-back  
features

# Gym Matta Floor Protection

Never before has there been a product with such versatile features:

- Comfortable
- Quiet under foot
- Hard wearing
- Super impact absorbing
- Practical colours
- Relocatable
- Good looking
- Attachable edge ramps
- Five year product guarantee

## Colours:

Gym Matta: Black, green, grey and airforce blue.

Gym Matta Carpet: Blue, green, red and grey corners with grey centre.

Gym Matta Ergo Cushion: Black, green, grey, blue, red, white and yellow.

## Installation:

Gym Mattas can be fitted directly over existing concrete, timber or carpet floors. While most specialist products require specialist installation, Gym Mattas can be installed quite simply by the owner/operator. The option of a Matta Products Installer is available.

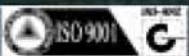
## Specifications:

- Size: 500 x 500 x 25mm (20" x 20" x 1")  
Weight: Gym Matta: 3,500g (7lb 14 oz)  
Gym Matta Carpet: 2,650g (5lb 13 oz)  
Edge size: 500 x 100mm (20" x 4")

## Ergo Cushion for the home gym

- Size: 500 x 250 x 15mm  
(20" x 10" x  $\frac{9}{16}$ " )  
Weight: 860g (1lb 14 oz)  
Edge size: 500 x 60mm  
(20" x 2  $\frac{3}{8}$ " )

New Zealand:  
Phone +64 09 478 1950  
Fax +64 09 478 1951



[www.nzmats.com](http://www.nzmats.com)